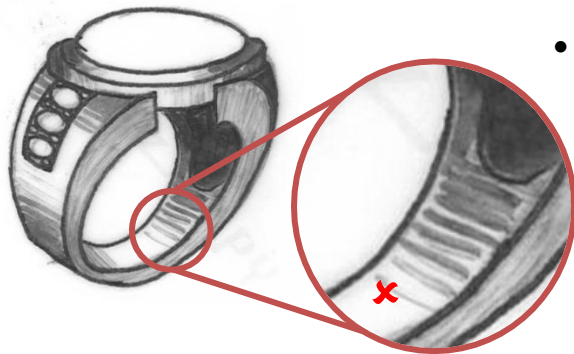
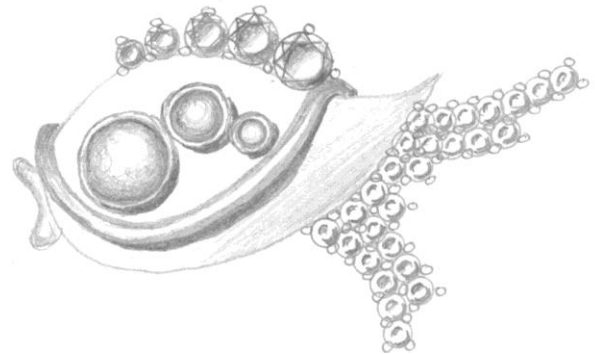


Tip #3: Use Shading to Enhance your Designs

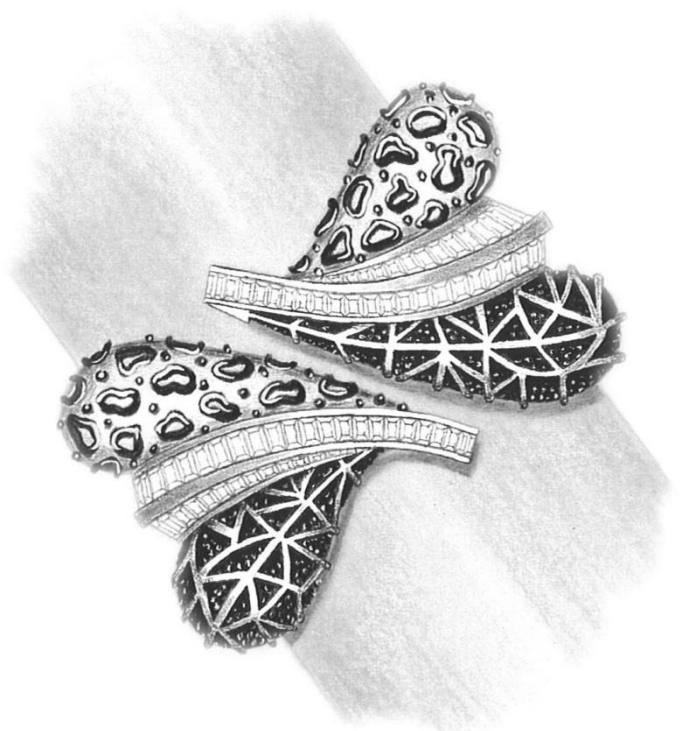
- Shading adds a dimensional and realistic quality to any drawing, and with a little practice, can be applied quickly to sketches as well as to draughts and drawings.
- For the best effect on the design, a light source from the upper left at a 45° angle to the object works well.



- When adding shading, be sure to ease pressure on your pencil as you work towards the highlights and always make sure there are no distinct stopping lines or bands.

- Shading is different for opaque and translucent/transparent items:
 - shading for the opaque object defines the surface contour
 - for translucent/transparent surfaces, shading need not have any relation to the surface contour, but how the light interacts with the material itself.

See demonstrations and learn more through the JDMIS Fundamentals of Jewellery Design Course.



Tanja M. Sadow: Dean of the Jewellery Design and Management International School

Tanja has been involved in the jewellery industry since 1983 and has worked as a Jewellery Designer, Jeweller, Gemmologist, Entrepreneur and Educator. She has won numerous international jewellery design awards including first prize in the prestigious Intergold International Jewellery Competition in New York. She shares her passion for great design and practical, wearable art with her students, corporate clients and industry colleagues.

